



**2024 FRUIT TREE CATALOG**

**GREAT TREES -  
GREAT PRICES!**

**Over 100 VARIETIES of Superior Quality  
Apple, Pear & Stone Fruit Trees**







## Greetings

**2023 was another eventful Year. Dry weather early on kept us on our toes, getting our overhead irrigation systems going much sooner than we normally need to.**

## 2024 FRUIT TREE CATALOG

<b>GREETINGS!</b> .....	<b>2</b>
<b>APPLE VARIETIES</b> .....	<b>4</b>
<b>PEAR VARIETIES</b> .....	<b>9</b>
<b>PEACH VARIETIES</b> .....	<b>10</b>
<b>POLLINATION GUIDELINES</b> .....	<b>11</b>
<b>CRAB APPLE POLLINIZERS</b> .....	<b>11</b>
<b>PRICE LIST</b> .....	<b>12</b>
<b>ROYALTIES</b> .....	<b>13</b>
<b>CUSTOM ORDER LIST</b> .....	<b>14</b>
<b>APPLE ROOTSTOCK</b> .....	<b>16</b>
<b>PEAR, PEACH, CHERRY &amp; PLUM ROOTSTOCK</b> .....	<b>17</b>
<b>TREE PLANTING GUIDE</b> .....	<b>18</b>
<b>PLANTING INSTRUCTIONS</b> .....	<b>19</b>
<b>ORCHARD SUPPLIES</b> .....	<b>20</b>
<b>DEPOSITS &amp; TERMS OF SALE</b> .....	<b>22</b>
<b>OUR COMMITMENT TO QUALITY</b> .....	<b>22</b>
<b>TREE GUARANTEE</b> .....	<b>23</b>

### ABOUT WAFLER NURSERY

Wafler Nursery specializes in growing 200 varieties of custom-budded apple and pear fruit trees including cider and antique varieties, scab resistant, and crab apple pollinizers across multiple rootstocks.

### CONTACT

Wafler Nursery  
10748 Slaght Road  
Wolcott, NY 14590  
877.397.0874  
info@waflernursery.com  
waflernursery.com





We also dealt with the Canadian forest fire smoke for some time blocking out some much-needed sunshine. Luckily the summer turned around and we had a good growing season towards the end.

We have a few new things to announce at Wafler Nursery. The first is that we are finally an approved nursery source to ship apple trees into Canada. With a few shipments going out this past spring we are ready for more in 2024. Growers in Canada that would like to receive our trees can call us and we can let you know which varieties (Based on the source of the Budwood) are approved for Import. Then you will need to file for an Import Permit, and we will handle the rest.

Next we are also excited to announce that we are back in the stone fruit business. 2024 will be our first year digging Peach, Cherry, and Plum Trees. We recognize many of our customers are diversified growers, so we decided to expand our offerings to better meet your needs. Our variety of offerings is still limited but we have many great varieties to offer. (See Custom Order List). Cherries and Plums are sold out for this Spring, but we do still have Peaches available to ship.

Lastly, we have a new apple sport to announce. Maia Mitchell is an exciting new high color sport of Maia 1 which many people recognize as Evercrisp®. Bill Pitts, our retired nursery manager found this limb

sport one fall while working with the summer pruning crew. He noted how much more color had already developed at that time compared to the rest of the block. After replicating it in several generations it was determined that the sport was stable and ready to be released. Maia Mitchell is named after Bill and Kerry's son, Mitchell, (pictured below) who passed away far too young. This Sport means a great deal to both Bill and Wafler Nursery. Availability will be limited availability in 2025, but 2026 is open for custom orders.

## the Waflers







## APPLE VARIETIES

In Order of Ripening in New York State



### **Dandee Red®**

**USPP# 16,620**

An exceptional early apple with holding ability, flavor and crunch! 80-100% bright, shiny red, looks like a fall apple. Ripens eight days before Paulared. Will hold up to three months in storage. Tip bearer.

## FEATURED!



### **MAIA-SM – Sweet Maia™**

**USPP# 34,437**

MAIA-SM – Sweet Maia™ – is a Honeycrisp/Winecrisp cross. It is an early season variety ripening last week of August in Western New York or 7-12 days before Gala. It has an 80-100% bright attractive color and has a long harvest window of 14-21 days, and stores up to four months. Must be a member of MAIA to order.



### **Zestar!®**

Ripens late August, Zone 3. Quality apple with nice acid/sugar ratio. Flavorful, good sized fruit, red striped over a cream background. Stores up to 7 weeks in regular storage. Cold hardy. Good resistance to Fire Blight.



### **RedRidge™ Gala**

**AB 1088 cv. PPAF**

This Gala is an exciting new introduction from International Plant Management that is almost 100% red blush. It colors very early, and develops into a deep red blush that can't be beat. It ripens 4-5 days ahead of its' parent, Brookfield Gala, with the same sweet taste.



### **Simmons Gala**

One of the darkest red and uniform galas on the market. Has some stripe but not as prominent as other galas. Its uniform color can make this a good one pick gala.



### **BL-14 Gala**

**USPP#27,867**

BL-14 Gala is a new high color strain of Gala. This was found as a limb sport off of an Ultima Gala tree. The apple is a deep red striping type gala. BL-14 is being looked at for its uniformity in fruit ripening and coloring, which will make for easier harvest management.



### **Baigent Gala**

Ripens early September.  
Originated in New Zealand.  
Has a bold red stripe over its red background. The apples early color permits proper harvest timing. Usually harvested in two pickings for best storage maturity, flavor retention and over all satisfaction.



### **'NY73'PPAF Pink Luster®**

**USPP# 32,702**

Matures Early-Mid September. Very large size, firm, crisp & attractive. Mild-flavor. Has very large conic fruit size and a very attractive pink blush (over Green/Yellow ground color) with excellent crisp texture and juiciness.



### **MAIA12 Summerset®**

**USPP 29,213**

Honeycrisp x Fuji cross. Harvest date is with Honeycrisp. It is an Autumn Apple only. High crispness, sweet/tart flavor with large fruit size and high tree vigor. Colors easier than Honeycrisp. Must be an MAIA member to purchase trees.



### **RubyMac®**

**USPP# 19,891**

An exciting sport of McIntosh that develops a bright, rich red blush with no striping, over virtually all of the surface. It is a true McIntosh and while it starts coloring weeks ahead of any other strain, it ripens with other McIntosh varieties and hangs on the tree longer than any Mac we have seen.



### **Roseland Red™ Honeycrisp**

Roseland Red™ Honeycrisp is a beautiful red strain of Honeycrisp that colors exceptionally well in the heat and really shines in cooler climates. It has that great Honeycrisp flavor and crunch with a typical Honeycrisp tree.



### **Royal Red Honeycrisp®**

**USPP 22,244**

Royal Red Honeycrisp® ripens the same time as standard Honeycrisp. This is a highly colored red strain that maintains the crisp, juicy texture of regular Honeycrisp. The tree can be less vigorous than its parent.

## **FEATURED!**



### **Kudos™ (MN33)**

**USPP 29,213**

Kudos™ is Minnesota Universities newest apple release. This apple is a Honeycrisp x Minnewashta (Zestar!) cross that ripens late September. This apple colors easily and has a sweet crisp flavor. Medium vigor, annual bearing and hardy to zone 4.



### **Pixie Crunch™**

**USPP 13,871**

Pixie Crunch™ has a crunchy crisp texture. This apple has a sweet flavor with a hint of tartness. It is smaller in size but has a distinct texture and crunch. Harvest from September to October. Long picking window on the tree.

**SCAB  
RESISTANT**



### **Triumph™**

**cv MN1980**

A new apple cultivar from the University of Minnesota. It is a cross between Honeycrisp and Liberty. Produces attractive fruit. It has shown excellent scab tolerance. It is a tart red apple with good storage life. Ripens Mid-September. Hardy to zone 4.



SCAB  
RESISTANT

## Autumn Crisp

**NY674 cv.**

Cross between Golden Delicious x Monroe. Ripens mid-late September. Dual purpose variety from the Geneva Research Station. Orange red stripe with yellow background. Non-browning flesh.



## CrimsonCrisp® (CO-OP 39)

**PP#16,622**

CrimsonCrisp® is a 95% deep red medium size apple that ripens midseason around the time of Cortland. The apple has a crisp bite with a tart flavor. The tree is very grower friendly. CrimsonCrisp® is scab-resistant and also shows resistance to cedar apple rust, powdery mildew and fire blight.



## Ambrosia

A chance seedling discovered in British Columbia, Canada. Ambrosia has a sweet and crisp flavor with a pinkish red color over yellow background. Tree is upright growing and very productive. Fruit ripens early October.



## Rising Sun Fuji®

**Gilmer cv.**

An early Fuji selection that ripens five to six weeks ahead of regular Fuji and colors to a beautiful 70-80% bright pinkish-red blush with a brighter, smoother finish than other early Fuji's.



## Hartencourt Cortland

Ripens in early October. An improved strain coloring to a solid blush. It is considered to be superior to all other Cortland's.

SCAB  
RESISTANT



## 'NY56' Cordera®

**PP30,758**

Matures Early October. Large size, firm & crisp. Similar to honeycrisp in appearance. Excellent quality for scab resistant variety. High yielding. Cedar apple rust resistant. Scion vigor is low, similar to Honeycrisp or weaker. Needs to be matched with higher vigor rootstock.

SCAB  
RESISTANT



## Liberty

Hardy in zones 4-8. Medium to large, bright, shiny, McIntosh type fruit with 90% red blush. Crisp, juicy, light yellow flesh. Flavor intensifies in storage. Annual bearer. Hardy, vigorous, heavily spurred, productive tree. Resistant to scab, fire blight, mildew, and cedar apple rust. Ripens early October.



## Macoun

Cross between McIntosh x Jersey Black. Ripens late September. Hardy to zone 4. Size and shape like McIntosh. More striped with deeper red coloring. Dark purplish red blush over green background. High quality, all purpose dessert apple. Medium size, vigorous, hardy, spur-type, productive tree. Very resistant to fire blight.



## Royal™ Empire

**Teeple cv.**

Cross Red Delicious x McIntosh. Ripens early October. Hardy to zone 5-8. Good for fresh eating, cider, sauce, cooking and freezing. Excellent flavor and good storage ability. Ripens two weeks after McIntosh.



**'NY109' Firecracker®**  
PP31,145

Matures Early-Mid October  
Medium size, very firm & crisp.  
High in both brix and acid, full flavor  
& very aromatic. Long storage life.  
Develops some russetting. Great for  
fresh, baking and cider.



**Golden Delicious  
(Gibson Strain)**

Ripens early October. Hardy  
to zone 5. Most russet resistant  
Golden Delicious clone commercially  
available. Smoother finish than  
regular Golden Delicious. Good size,  
firmness and flavor. Good keeper.  
Vigorous productive tree.

SCAB  
RESISTANT



**Freedom**

Freedom is a large bright red apple  
with a yellow background. The apple  
is a great multipurpose apple for  
eating, cooking or cider. The fruit  
ripens mid-season with Red  
Delicious. Stores until January.  
Freedom is highly resistant to scab,  
and moderately resistant to  
mildew and fire blight.

SCAB  
RESISTANT



**Galarina™  
(X-4982 CLTV.)**

Galarina™ is a Gala type highly  
scab resistant apple. Matures in  
October along with Empire.  
The apple hangs on the tree very  
well and shows little stem cracking  
even after harvest date. The fruit is  
very crisp and sweet and stores in  
regular storage for 4 months. The  
tree is vigorous and more hardy than  
gala. Galarina™ also shows high  
resistance to powdery mildew.



**Chrisolyn™  
Jonathan**  
USPP# 21,300

A striped red Jonathan that  
originated in Missouri. It maintains  
it's bright, bold, striping as it matures  
and finishes to a cherry red color.  
Has crisp flesh and excellent  
storage characteristics.



**Jonastar®  
Jonagold**  
PP#20,590

A striped red Jonathan that  
is a relative of "Jonagold" with the  
same reliable quality, but with bright  
red, large apples, and tangy, juicy  
yellow-white flesh. This apple tree  
is an exciting full red variety that is  
virtually 100% red six to eight weeks  
before maturity.



**Crispin (Mutsu)**

Golden Delicious x Indo. Ripens  
early to Mid-October. Hardy to  
zone 4-8. Large round, yellow fruit.  
Sweet flavor. Excellent for eating,  
sauces, baking, salads, and pies.  
Large, spreading vigorous tree;  
annual, early producer. Triploid.



**Pink Lady® Barnsby**  
USPP# 21,606

Matures 3-4 weeks earlier than the  
standard Cripps Pink variety of Pink Lady.  
This is a benefit for growers concerned  
about harvesting Pink Lady apples to late  
and exposing them to freezes. In addition,  
the Barnsby doesn't need to be stored  
before shipping, as other Pink Lady  
varieties need be.



**MAIA11 Rosalee®**  
USPP# 24,579

MAIA11 harvests 2 weeks after  
Golden Delicious. MAIA11 apples  
that meet quality requirements will be  
marketed as Rosalee®. MAIA11  
fruit has a clean, floral taste with  
spectacular texture. Thin skin requires  
gentle picking. Must be a MAIA  
member to purchase trees.





### **Fuji Supreme™** **USPP# 17,914**

Standard Fuji ripening time is late October. Variety is a heavy coloring stripe selection. Typical Fuji issues are blind wood and bi-annual production so good horticultural practices must be in place in order to reduce this as much as possible.



### **MAIA-Z Sweet Zinger®** **USPP# 30,059**

Gold Rush x Sweet 16 cross. Harvest date is 2 weeks after Golden Delicious. It is a long keeper with high crispness and a sweet/tart flavor. The fruit is large and the tree vigor is medium. Must be an MAIA member to purchase trees.



### **MAIA-L Ludacrisp®** **USPP# 30,472**

Open pollinated Honeycrisp. The harvest date is three weeks after Golden Delicious. It is a longer keeper with high crispness, and has tropical fruit tones. The fruit size is large and the tree vigor is high. Must be a MAIA member to purchase trees.



### **Story® Inored**

Spreading growth habit with low to average vigor. Flowering period is the same as Golden. Harvest is 15 days after Golden. Good productivity, precocious, good distribution of crop load, and no pre-harvest drop. Story® is resistant to common strains of scab. The fruit is very attractive. It is bi-color with a dark shiny red overcolor that covers 3/4 of the apple.

**SCAB  
RESISTANT**



### **WineCrisp™ (CO-OP 31)** **PP#20,437**

Winecrisp™ is a medium size red apple with small tan lenticels. The tree is moderately vigorous with no blind wood. The fruit is firm and mild and stores very well for up to 9 months. The apple is not prone to early fruit drop. Winecrisp™ is immune to scab, and moderately resistant to cedar apple rust, and mildew.

**SCAB  
RESISTANT**



### **Goldrush™** **(CO-OP 38)**

Golden Delicious x Co-17. Ripens in late October. Disease resistant, late harvesting yellow apple. Flesh is hard, very crisp. Stays crisp for months in storage with flavor mellowing from tart to tart-sweet. Spur type upright tree.



### **Enterprise™** **(CO-OP 30)**

Enterprise™ is a large deep red apple with a yellow background. The fruit ripens in late October and its full flavor develops after a month or two in storage. The tree is vigorous. Enterprise™ is immune to scab, highly resistant to fire blight and cedar apple rust, and moderately resistant to mildew.

## **FEATURED!**



### **Maia Mitchell - EverCrisp®**

This is a new high color sport off of Maia 1. This Sport was found by Bill Pitts in Wafler Farms Orchards. It was noticed because of how much earlier it had developed color compared to the orchard when summer pruning. This apple has all the great flavor and storability as Maia 1. Apples will still be marketed as Evercrisp® if they meet the quality standards. Must be a MAIA member to purchase trees.





## PEAR VARIETIES

**Not all varieties are listed**



### **Bartlett (European)**

A large, heavy bearing, variety, with excellent quality. Long considered one of the top canning varieties. A favorite for all uses.

Its skin is yellow blushed with brownish red, Pyriform in shape. Ripens off the tree. Can keep up to 3 months. Ripens mid-August to mid-September. Zone 5-8



### **Bosc (European)**

The Bosc Pear is medium to large dark yellow fruit with brownish russeted skin and a long, gourd-shaped neck. It is aromatic, juicy, firm texture, smooth textured and white fleshed with a rich, slightly acid flavor that is great for eating, baking and drying. Can keep up to 6 months. Tree is upright, hardy and productive. Ripens early to mid-October. Zone 4-9



### **AC™ Harrow Crisp**

**PP# 17,843 (HW610 Clvt.)**

Harrow Crisp was developed by the Harrow Research Station in Ontario, Canada. This variety ripens the same time as Bartlett with slightly larger sizing. Fruit has a very attractive finish with red blush over smooth, yellow skin and a mild sweet flavor. The tree is hardy, productive and has proven resistance to blight.



### **AC™ Harrow Sweet**

**PP# 9,863(HW609 Clvt.)**

A late season pear developed by the Harrow Research Station in Ontario, Canada. Harrow Sweet ripens approximately three weeks after Bartlett. This variety has shown very good resistance to blight. The fruit size and appearance are similar to that of Bartlett. AC™ Harrow Sweet has an attractive blush



### **Flemish Beauty**

(European) Large, roundish and uniform in size and shape. Reddish blushed color on a clear yellow skin. Flesh is firm, but tender. An excellent dessert quality which is aromatic, well-balanced, rich flavor. Good for fresh fruit and drying. Ripens mid-September in Western New York. Cold Hardy to zone 4.



### **Seckel Pear**

A wild seedling from Pennsylvania. Small, yellowish brown skin color. Excellent dessert pear. Very crunchy. Ripens mid-September in Western New York. Hardy to zone 5. Somewhat fireblight resistant.



## PEACH VARIETIES

**Not all varieties are listed**

### **Earlystar® (FA101)**

Ripens 18 days before Redhaven (-18) with 80 to 90% red coloration and very few split pits. It has an excellent sweet flavor and firm texture. Earlystar® is partially freestone when fully ripe. It is an exceptional early season peach and perfect for early fresh markets.

Earlystar sets heavy crops and requires early, heavy thinning to achieve optimum size.

### **Risingstar® (FA47)**

Ripens 5 days before Redhaven with a bright orange red color. 2-1/2 inch peach will benefit from early thinning. Semi Freestone, Bacterial spot and canker resistant.

### **Redhaven**

The Standard for Peaches. Bright red medium size fruit with firm yellow flesh becomes freestone as it ripens.

Ripens around the beginning of August in New York.

### **CoralStar®**

Ripens just before Loring or 12 days after Redhaven. The fruit averages 2-3/4" to 3" and has an 80% bright, orange-red skin with a coral stripe.

The appearance is complimented by both great flavor and aroma.

Coralstar® has both bud and blossom hardiness and holds and stores well. The tree is productive, hardy, and canker resistant.

Coralstar® has it all; exceptionally beautiful appearance, size, and flavor. This Stellar peach is a standout for both fresh market and shipping.







## POLLINATION GUIDELINES

We recommend for greatest pollinization to plant 2 or more varieties. For larger planting we recommend planting alternating rows. Example: 6 rows variety A, 6 rows variety B. Planting Sets wider than 80 feet of one variety will decrease pollination. Generally when planning your orchard you want to put varieties together that bloom at the same time. For example Early Bloom Varieties with other Early Bloom varieties. The flowers are open at the same time and allow bees to cross pollinate to produce fruit. Another option is to add in crab apple pollinizers to your orchard to pollinate the varieties.

### Early Bloom Variety Examples

(Some not all) Empire, Braeburn, Idared, Dandee Red, Liberty, Lodi

### Mid-Season Bloom Variety Examples:

(Some not all) Cortland, Zestar!, Gala, Granny Smith, Crispin

### Mid to Late Bloom Variety Examples:

Golden Delicious, Rosalee, Summerset, Evercrisp, Sweet Zinger, Ludacrisp, Fuji

### Late Bloom Variety Examples:

(Some not all): Honeycrisp, Roseland Red Honeycrisp, Royal Red Honeycrisp, Co-op 38, Rome, Northern Spy, Jonastar Jonagold

### Do Not Use as a Pollen Source:

Jonastar Jonagold and Crispin

---

## CRAB APPLE POLLINIZERS

If you wish to plant only one variety blocks, then you must use crab pollinizers. Crabs should be interplanted in staggered rows, allowing one Crabtree for every 10 apple trees. They can be planted between two normally spaced trees and trained as a spindle. We strongly suggest planting several varieties of crabs. Our pollinizing crabs are white flowered.



**Manchurian Crab**  
(Early-mid)



**Snowdrift Crab**  
(Mid-late)



**Frettingham Crab**  
(Late)



## PRICE LIST

### 2026 Custom Order Price

TREE SIZE	50+	100+	200+	500+	1,000+	5,000+	10,000+
FEATHERED	\$ 12.26	\$ 11.52	\$ 10.77	\$ 10.04	\$ 9.30	\$ 8.57	\$ 7.83
5/8"	\$ 11.60	\$ 10.87	\$ 10.14	\$ 9.39	\$ 8.65	\$ 7.92	\$ 7.18
1/2"	\$ 11.05	\$ 10.32	\$ 9.59	\$ 8.85	\$ 8.12	\$ 7.39	\$ 6.64
7/16"	\$ 10.52	\$ 9.79	\$ 9.05	\$ 8.30	\$ 7.57	\$ 6.84	\$ 6.10
3/8"	\$ 9.97	\$ 9.24	\$ 8.51	\$ 7.77	\$ 7.03	\$ 6.30	\$ 5.56
1/4"	\$ 8.73	\$ 8.00	\$ 7.26	\$ 6.52	\$ 5.79	\$ 5.05	\$ 4.32

### 2024 Regular Inventory Price

TREE SIZE	50+	100+	200+	500+	1,000+	5,000+	10,000+
FEATHERED	\$ 12.55	\$ 11.85	\$ 11.16	\$ 10.47	\$ 9.77	\$ 9.08	\$ 8.38
5/8"	\$ 11.93	\$ 11.24	\$ 10.55	\$ 9.85	\$ 9.16	\$ 8.47	\$ 7.77
1/2"	\$ 11.42	\$ 10.73	\$ 10.04	\$ 9.34	\$ 8.65	\$ 7.96	\$ 7.26
7/16"	\$ 10.91	\$ 10.22	\$ 9.53	\$ 8.83	\$ 8.14	\$ 7.45	\$ 6.75
3/8"	\$ 10.40	\$ 9.71	\$ 9.02	\$ 8.32	\$ 7.63	\$ 6.94	\$ 6.24
1/4"	\$ 9.23	\$ 8.54	\$ 7.84	\$ 7.15	\$ 6.46	\$ 5.76	\$ 5.07

#### Additional Costs

Geneva® G.11, G.30, G.935, and G.969 ..... add \$1.00/tree  
 Geneva® G.41 ..... add \$2.00/tree  
 GISELA Cherry Rootstock ..... add \$4.00/tree  
 Mazzard Cherry Rootstock ..... add \$2.00/tree  
**PLUS ROYALTIES**

#### Non-Commercial Pricing

2-5 trees .....\$22.00  
 6-24 trees .....\$17.00  
 25-49 trees.....\$15.00  
**PLUS ROYALTIES**



# ROYALTIES

Prices per tree and must be added to the base price.



## Apple

Bakers Delight® cv 'MAIA8' (PPAF) . . . . .	\$1.50
BL-14 Gala . . . . .	\$1.50
Blondee™ . . . . .	\$1.00
Buckeye® Prime . . . . .	\$1.00
Cameron Select® Honeycrisp . . . . .	\$0.25
Cammi® . . . . .	\$1.00
Chrisolyn® Jonathan . . . . .	\$1.00
Crimson® Topaz . . . . .	\$1.00
CrimsonCrisp® (CO-OP 39) . . . . .	\$1.35
Crunch-a-Bunch . . . . .	\$1.50
Dandee Red® . . . . .	\$1.00
Evercrisp® cv 'MAIA-1' . . . . .	\$1.00
Franklin . . . . .	\$2.00
Fuji Supreme™ . . . . .	\$1.25
Galarina™ . . . . .	\$1.15
Galaval® (USPP 19909) . . . . .	\$2.00
Heliodor™ (cv IEB 3264/1) . . . . .	\$1.25
Jonastar® . . . . .	\$1.00
Kindercrisp ('MAC2127' cv) . . . . .	\$1.25
Kudos (MN33 Cv.) . . . . .	\$1.40
Kumeu Crimson® . . . . .	\$0.80
'Lady in Red' (Pink Lady®) . . . . .	\$1.45
Ludacrisp® cv MAIA-L . . . . .	\$1.00
MAIA-Mitchell . . . . .	\$1.00
Morning Mist™ . . . . .	\$1.25
'NY109' Firecracker® PP31, 135 . . . . .	\$1.75
'NY56' Cordera® PP30, 758 . . . . .	\$1.75
'NY73' Pink Luster® PPAF . . . . .	\$1.75
Pink Lady® Brand Barnsby (PLBARB1 cv) . . . . .	\$2.00
Pixie Crunch™ . . . . .	\$1.25
RedRidge™ Gala . . . . .	\$1.00
Rising Sun® Fuji . . . . .	\$1.00
Rosalee™ MAIA11' . . . . .	\$1.00
Roseland Red™ Honeycrisp (cv RS 1087) . . . . .	\$1.00
Royal Red Honeycrisp® . . . . .	\$2.00
Ruby Mac® . . . . .	\$1.25
SnowSweet® . . . . .	\$1.00
Story® (INORED cv) . . . . .	\$1.00
Summerset™ MAIA12' . . . . .	\$1.00
SunCrisp® . . . . .	\$0.40
Sundance™ . . . . .	\$1.25
Sweet Maia™ cv 'MAIA-SM' . . . . .	\$1.00

Sweet Zinger™ 'MAIA-Z' . . . . .	\$1.00
Sweetie™ . . . . .	\$1.25
Triumph™ (cv MN1980) . . . . .	\$1.25
William's Pride! . . . . .	\$0.50

## Pear

AC™ Harrowcrisp . . . . .	\$1.75
AC™ Harrowsweet . . . . .	\$1.75
Coldsnap™ Brand Pears . . . . .	\$1.50
Juicy Jewel™ (cv MN121) . . . . .	\$1.50

## Peach

Autumnstar® (FA 42) . . . . .	\$1.00
Coralstar® (FA 59) . . . . .	\$1.00
Earlystar® (FA 101) . . . . .	\$1.00
Clowingstar® (FA 17) . . . . .	\$1.00
PF 5D . . . . .	\$1.50
PF 8 Ball . . . . .	\$2.00
PF Lucky 13 . . . . .	\$0.60
Radstar® (FA 52) . . . . .	\$1.00
Risingstar® (FA 47) . . . . .	\$1.00
Starfire® (FA 11) . . . . .	\$1.00
Sweetstar® (FA 1566) . . . . .	\$1.00

## Cherry

Benton . . . . .	\$0.75
Black Pearl . . . . .	\$1.00
BlackGold . . . . .	\$1.00
Burgundy Pearl . . . . .	\$1.00
Danube . . . . .	\$1.00
Ebony Pearl . . . . .	\$1.00
Radiance Pearl . . . . .	\$1.00
Regina . . . . .	\$0.75
WhiteGold . . . . .	\$1.00

## Plum

Blackice® Plum (cv LYDECKER) . . . . .	\$1.25
--	--------



## CUSTOM ORDER LIST

Below is a list of the varieties we offer for custom budding. They are listed by category and ripening date in NY.  
Any of these varieties can be ordered on any rootstock for 2026. Minimum 25 trees per variety/rootstock combo.  
By ordering ahead it helps guarantee the best quality trees and the combination you need for your farm.

### Dessert

**July 20**

LODI

**August 5**

PRISTINE™

**August 15**

DANDEE RED®

**August 20**

CRITERION  
EMPRESS  
STATE FAIR  
SWEET MAIA™ CV MAIA-SM  
ZESTAR!®

**August 25**

EARLIGOLD(HARVEY)  
GINGERGOLD  
KINDERKRISP(MAC2137' CV)  
MILTON

**September 1**

AKANE  
REDRIDGE™ GALA  
SWEETIE™

**September 5**

BAIGENT GALA  
ALVINA GALA  
BL-14 GALA  
BUCKEYE® PRIME  
JONAMAC  
PITTS GALA  
SIMMONS GALA

**September 10**

ELSTAR  
LINDA MAC®  
'NY73' PINK LUSTER® PPAF  
SUMMERSET™ CV 'MAIA12'

**September 15**

BLONDEE  
HONEYCRISP(MN1711 CV)  
PINK PEARL  
PRAIRIE MAGIC  
ROGER(BUHR) MAC  
ROSELAND RED™ HONEYCRISP(CV  
RS 1087)  
ROYAL RED HONEYCRISP®  
RUBYMAC®  
TSUGARU

**September 20**

AUTUMN CRISP  
BAKERS DELIGHT®  
CV 'MAIA8' (PPAF)  
CRUNCH-A-BUNCH®  
CV 'MAIA7' (PPAF)  
PIXIE CRUNCH™  
TRIUMPH™(CV MN1980)

**September 25**

AMBROSIA®  
SWEET SIXTEEN

**September 30**

30 BONNIES BEST  
FROSTBITE™  
HONEYGOLD  
RED HARALSON  
SENSHU

**October 1**

CORTLAND  
CRESTON  
CRIMSON GOLD  
FIERO FUJI  
HAMPSHIRE  
MORNING MIST™  
RISING SUN® FUJI  
HARTENCOURT CORTLAND  
SNAPDRAGON

**October 5**

'NY109' FIRECRACKER® PP31,135  
GOLDEN DEL (GIBSON)  
GOLDEN DEL (OWN)  
MACOUN  
MAIA T  
MELROSE  
ROYAL® EMPIRE  
SPENCER

**October 10**

CHRISOLYN® JONATHAN  
CRISPIN  
JONASTAR® JONAGOLD  
RUBYFROST

**October 15**

PINK LADY® BRAND  
BARNBY (PLBARB1 CV)  
CAMMI™ CAMEO  
IDARED  
REGENT  
ROSALEE™ CV 'MAIA11'  
SNAPP™ STAYMAN  
SNOWSWEET®  
SPIGOLD  
SPIJON  
SUNCRISP®

**October 20**

FUJI SUPREME™  
KEEPSAKE  
LUDACRISP™ CV 'MAIA-L'  
NITTANY  
QUERINA® (FLORINA)  
ROME-BEAUTY  
ROME(TAYLOR)  
RUBINETTE  
SHIZUKA  
STRIPE FUJI (CV DT2)  
SWEET ZINGER™ CV 'MAIA-Z'

**October 25**

EVERCRISP® CV 'MAIA1'  
MAIA-MITCHELL

### Antique

**July 20**

YELLOW TRANSPARENT

**August 20**

DUCHESS

**August 25**

CHENANGO STRAWBERRY  
RED GRAVENSTEIN

**August 30**

WHITNEY CRAB

**September 1**

SUMMER RAMBO

**September 15**

COX ORANGE PIPPIN  
ST. EDMUNDS

**September 20**

HUDSON'S GOLDEN GEM

**September 25**

MAIDEN BLUSH

**September 30**

TWENTY OUNCE  
BEN DAVIS  
FAMEUSE  
GOLDEN SUPREME  
POUND SWEET  
SHEEP NOSE  
MARGIL  
MONARCH

**October 1**

BRAMLEY'S SEEDLING  
TOMPKINS KING

**October 5**

GRIMES GOLDEN  
WOLF RIVER  
POMME GRIS

**October 10**

RI GREENING

**October 15**

NORTHERN SPY

**October 20**

BALDWIN  
BLACK TWIG  
SMOKEHOUSE  
WINTER BANANA  
GRANNY SMITH

**October 25**

CALVILLE BLANC  
ESOPUS SPITZENBURG  
GOLDEN RUSSET

**October 30**

BLACK OXFORD  
WINESAP

**November 1**

ARKANSAS BLACK  
COURT PENDU PLAT  
NEWTON PIPPIN  
NW GREENING  
KING DAVID



## Cider

**August 15**  
BROWNS APPLE

### September 1

CHESTNUT CRAB  
DOLGO CRAB  
GRANIWINKLE  
MAJOR

### September 5

MICHELIN

### September 10

ASHTON BITTER  
ELLIS BITTER  
ROBERTS CRAB

### September 15

CRISTALINA  
HEREFORDSHIRE REDSTREAK  
HEVES CRAB(VIRGINIA CRAB)  
KINGSTON BLACK  
MARIALENA  
MUSCADET DE DIEPPE  
PIEL DE SAPA

### September 25

BULMERS NORMAN  
HARRY MASTERS JERSEY  
NEHOU  
SOMERSET REDSTREAK

### September 30

SOLARINA

### October 1

TREMILETT'S BITTER  
RUBAIYAT

### October 5

OTTERSON

### October 15

BROWNS SNOUT  
CHISEL JERSEY  
COAT JERSEY  
COLORADONA  
DABINETTE  
FRANKLIN  
YARLINGTON MILLS

### October 20

ASHMEAD'S KERNEL  
CALLAOS  
HARRISON  
MEDAILLE D'OR  
ROXBURY RUSSET  
SANGRE DE TORO  
WICKSON

### October 30

BINET ROUGE  
BLANQUINA  
PORTER'S PERFECTION  
REDFIELD

### November 1

STOKE RED

### November 5

CAMPFIELD

## Scab Resistant

**August 20**  
WILLIAM'S PRIDE

### August 25

RED FREE

### September 10

NOVA MAC

### September 25

CRIMSONCRISP® (CO-OP 39)

### October 1

'NY56' CORDERA® PP30,758  
LIBERTY

### October 5

FREEDOM  
GALARINA™

### October 10

CRIMSON® TOPAZ  
HELIODOR™ (CV IEB 3264/1)

### October 15

MANDY® (INLOV CV)  
NOVA EASYGRO

### October 20

STORY® (INORED CV)  
WINECRISP

### October 25

ENTERPRISE  
SUNDANCE™

### November 5

GOLDRUSH® (CO-OP38)

## Crab (bloom time)

**Early**  
ROSEDALE

### Early-Mid

MANCHURIAN CRAB

### Mid Late

SNOWDRIFT  
GOLDEN HORNET

### Late

GOLDEN HORNET

## Pear

**August 15**  
BARLAND  
JUICY JEWEL™ (CV MN121)

### August 20

BARTLETT  
AC™ HARROWCRISP

### August 30

SECKEL PEAR

### Septmber 5

FLEMISH BEAUTY

### September 10

BUTT PEAR  
GIN PEAR  
HELLEN'S EARLY  
COLD SNAP™ BRAND PEARS

### September 15

AC™ HARROWSWEET

### September 20

BOSC PEAR

### September 25

BLAKENEY RED PEAR

### October 1

BARNETT

## Sweet Cherry

### -7 Before Bing

BLACK PEARL  
RADIANCE PEARL

### -5 Before Bing

RANIER

### -3 Before Bing

BURGUNDY PEARL  
EBONY PEARL

### -2 Before Bing

BENTON

### July 10 in NY

BING

### + 3 After Bing

WHITEGOLD

### + 7 After Bing

BLACKGOLD

### + 10 After Bing

LAPINS

### + 13 After Bing

REGINA

### + 14 After Bing

BLUSHINGGOLD

## Tart Cherry

### -10 Before Montmorency

JUBILEUM

### -5 Before Montmorency

DANUBE

### -0 Before Montmorency

METEOR

### Early July

MONTMORENCY

### +10 After Montmorency

NORTH STAR CHERRY

## Peach

### -18 Before Redhaven

EARLYSTAR® (FA 101)

### -10 Before Redhaven

PF 8 BALL

### -3 Before Redhaven

RELIANCE

### August 1 in NY

REDHAVEN

### +0 After Redhaven

SATURN  
STARFIRE® (FA 11)

### +5 After Redhaven

PF LUCKY 13

### +12 After Redhaven

CORALSTAR® (FA 59)

### +20 After Redhaven

CONTENDER

### +25 After Redhaven

CRESTHAVEN

### +27 After Redhaven

MADISON

### +35 After Redhaven

AUTUMNSTAR® (FA 42)

## Plum

**July 15**  
SHIRO PLUM

### August 1

BLACKICE® PLUM(CV LYDECKER)  
OULLINS PLUM

### August 10

REINE CLAUDE CONDUCTA

### August 11

CASTELTON PLUM

### August 20

BLUE BYRD PLUM  
TOKA PLUM

### September 1

KENMORE  
STANLEY PRUNE

### September 15

PRESIDENT PLUM



# APPLE ROOTSTOCK

Listed in order from smallest to largest

## B9

A fully dwarfing rootstock only slightly smaller than M9 but in most respects similar. It is very cold hardy, resistant to collar rot, and is fireblight resistant. Requires a permanent support system. Can tolerate a wide range of soil conditions.

## M9 (337)

Produces a fully dwarfed tree with good fruit size. Ideal for high density plantings. Induces early cropping. Trees are very precocious and can tolerate a wide range of soil conditions. Requires a permanent support system. May require irrigation if there is not ample soil moisture on site.

## Geneva® G.11

Produces tree slightly larger than the M9. It is moderately resistant to fire blight, woolly Apple Aphid. Vigor is comparable to M9 rootstock.

## Geneva® G.41

USPP# 17,139

This rootstock is a cross of Malling 27 x Robusta 5 introduced by Cornell University/Geneva Apple Rootstock Breeding Program. Similar to M9 with good precocity & fruit size. Resistant to fire blight & Phytophthora. Shows resistance to replant disease and appears to be winter hardy. Requires permanent staking. Weak bud union in first year.

## NIC® 29

Produces tree slightly larger than M9. A more vigorous and extensive root system gives the tree slightly extra vigor than the M9. Can tolerate a wide range of soil conditions. Requires a permanent support system.

## BUD-10®

cv Mich96 USPP# 21,223

Produces tree similar to NIC29 in climates like New York. It is cold hardy. Fireblight resistant. Yields better than M9. Branch angles close to 90 degrees. Tried in the U.S. for over a decade. Good alternative to the Geneva series.

## Geneva® G.935

PP #17,063

This rootstock is a cross of Ottawa 3x Robusta 5 introduced by Cornell University/Geneva Apple Rootstock Breeding Program. Trees produced are slightly larger than trees budded on M26. Resistant to fire blight and Phytophthora but not woolly apple aphid. Temporary staking is recommended but permanent staking is better. Virus Sensitive.

## M26

Semi-dwarf rootstock. An early bearer producing good sized fruit. Temporary staking is recommended, but permanent is better. Subject to collar rot (Phytophthora) and fire blight. If planted with the right site conditions, this rootstock is excellent and highly favored.

## Geneva® G.30

Resistant to fire blight, collar rot, and woolly apple aphid. Considered to be a free standing precocious tree, but we recommended temporary staking. It is slightly smaller than the M7. Well anchored. Appears to be suitable for a wide variety of soils.

## Geneva® G.969

PP #24,073

Semi-dwarf rootstock that is resistant to fireblight, crown rot, and woolly apple aphid. Slightly smaller than M7. Staking is recommended. Has weak graft union. Virus sensitive.

## M7

Produces a freestanding tree. It is widely used in the U.S. due to its hardiness and good anchorage. Does best on deep fertile soils and is resistant to collar rot. Has a tendency to root sucker and shouldn't be planted on hardpan, due to deep tap root.

## MM106

Produces a freestanding tree. Precocious and resistant to woolly apple aphids. High susceptible to root rots so well drained soil is a must.

## MM111

Produces a large, semi-dwarf tree. Tree is well anchored and does well in a wide variety of soil types. Recommended for heavy, poorly-drained soils and also where drought conditions occur.

## B118

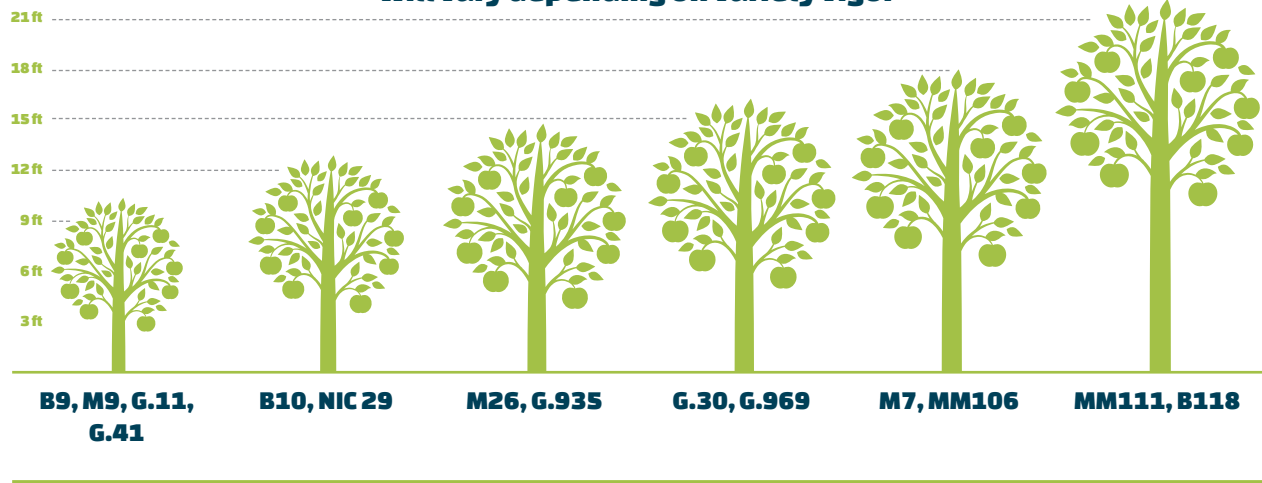
Produces a large, semi-dwarf tree. Does well on all soil types. Is extremely winter hardy. More precocious than MM111.





## Tree Size in Feet at Maturity

Will vary depending on variety vigor



## PEAR, PEACH, CHERRY & PLUM ROOTSTOCK

### OHxF87 – Pear

#### Old Home x Farmingdale 87

Part of the Old Home x Farmingdale rootstock series. It is a semi-dwarf root which produces a tree about 75% the size of a standard tree. It is an excellent producer.

It is resistant to fire blight and pear decline.

Over cropping in the first years should be avoided until the tree is established. Zones 4-8.

### OHxF97 – Pear

#### Old Home x Farmingdale 97

Standard rootstock for European and Asian pears. Has proven to be more productive than Pyrus communis.

Trees will be near standard size. Productive and well anchored. Good candidate for weaker growing Asian varieties. Resistant to pear decline and firelight.

Hardy and resilient to cold. Zones 4-8.

### Krymsk® 86 – Peach

A newer cloned peach rootstock. Similar production and vigor to Baileys and Lovell. Has superior anchorage and is more adapted to wetter soils than most rootstocks. Cold hardy.

### Gisela 6 – Cherry

Produces a tree 65% size of Mazzard. Adapted to all soils. Good virus tolerance and bacterial canker resistant. Support is recommended. Proper pruning required to maintain fruit size.

### Mazzard – Cherry

Standard size cherry rootstock. Fibrous root system makes mazzard more tolerant to a range of soils including wetter soils.

### Myrobalan 29C – Plum

Vigorous plum rootstock. Well anchored, free standing. Good resistance to crown gall.



# TREE PLANTING GUIDE

CLASSIFICATION	ROOT-STOCK	HEIGHT OF MATURE TREE	STAKING	SOIL TYPE	SPACING FOR FARMERS	TREES PER ACRE	SPACING FOR HOMEOWNERS	FIREBLIGHT RESISTANT
APPLES								
DWARF	B9	10-12 ft.	Permanent	All	3X12	1210	5X18	Yes
DWARF	G.11	10-12 ft.	Permanent	All	3X12	1210	5X18	Somewhat
DWARF	M9/337	10-12 ft.	Permanent	All	3X12	1210	5X18	No
DWARF	G.41	10-12 ft.	Permanent	All	3X12	1210	5X18	Yes
DWARF	Bud-10®	11-13 ft.	Permanent	All	4X14 to 3X12	1210	6X18	Yes
DWARF	Nic29	11-13 ft.	Permanent	All	4X14 to 3X12	1210	6X18	No
SEMI-DWARF	G.935	12-14 ft.	Permanent	All	5X15	580	8X18	Yes
SEMI-DWARF	M26	12-14 ft.	Permanent	Dry or Gravel	5X15	580	8X18	No
SEMI-DWARF	G.969	14-16 ft.	Permanent	All	6X16	454	10X20	Yes
SEMI-DWARF	G.30	14-16 ft.	Permanent	All	6X16	454	10X20	Yes
SEMI-DWARF	M7	15-17 ft.	No Stake	Deep Tap Root	8X18	302	12X25	No
SEMI-DWARF	MM106	16-17 ft.	No Stake	Dry	8X18	302	12X25	No
STANDARD	MM111	16-18 ft.	No Stake	All	10X20	218	15X30	No
STANDARD	B118	16-18 ft.	No Stake	All	10X20	218	15X30	Somewhat
PEARS								
PEARS	OHXF87	14-16 ft.	No Stake	All	6X16	454	12X24	Yes
PEARS	OHFX97	16-18 ft.	No Stake	All	10X20	218	15X30	Yes
PEACH   NECTARINE   CHERRY   PLUM								
PEACH/NECTARINE	Krymsk® 86	14-16 ft.	No Stake	All	Open Center: 14X20 Perpendicular "V": 6X20	363/155	15X30	N/A
Cherry	Gisela 6	14-16 ft.	Suggested	All	6X16	454	12X25	N/A
Cherry	Mazzard	18-20 ft.	No Stake	All	15X20	145	15X30	N/A
Plum	Myrobalan 29C	18-20 ft.	No Stake	All	12X20	181	15X30	N/A





# PLANTING INSTRUCTIONS

## Upon Arrival

Inspect trees for possible drying out of roots during transit. We pack our trees carefully for shipping but if damage is detected (i.e., freezing in transit, drying out, breakage) report it to the carrier and **call us at once**. We may be able to offer some help. If there is frost in the box, close it up again and place it in a cool area where it can warm up **very slowly**. Verify packing slip matches what was delivered. All claims regarding delivery of the trees must be made within 5 days of delivery.

## Site Selection + Prep.

Fruit trees require well-drained soil. Choose sites or soils that are naturally well drained or improve the site with drainage tile. A soil test is a good place to start to determine your fertilizer needs. Most fruit trees like a soil pH of 6.0- 7.0. Adjust with lime if pH is too low. It is important to have any fertilizer application thoroughly mixed in soil **DO NOT** put any fertilizer directly in the hole with the roots as this can burn them.

## Storage

For best results, the trees should be planted as soon as possible after receiving. If you must store them, keep them in a cool or cold (but not freezing) place. Do not store the trees with apples or in any storage that has not been fully aired out to remove ethylene gases that fruit produce. All tree warranties are void if stored near ethylene gases. Inspect them regularly. The roots should be kept moist but not wet and the tops dry. Don't store where mice can get at them.

## If the buds have started to grow

If buds are just swelling or stretching, plant them within 1 to 2 days in their final location if possible. If you have 1/2" of growth or more, heel the trees (temporarily plant) them on the north side of a building or another place where sun will not hit them directly. Shelter them from a lot of wind also. You want the yellowish growth to turn green (2-4 days normally) Plant as soon as they have been acclimated to the light. Take extra care that the roots remain moist all the time.

## Planting

DO NOT leave tree roots soaking in water before planting. This is an old planting practice that can do more harm than good to young tree roots. It is better to plant the trees and water the soil adequately. For a few trees, holes may be dug with a shovel. For a larger number of trees, a tractor powered auger or tree planter is used. Dig the hole large enough so that the roots can be spread out and deep enough so that the tree can be planted leaving the bud union (the knobby part of the trunk above the roots) out of the ground 3-4". It is very important to maintain the graft union height. The closer to ground it is the more vigorous the tree will be. The farther out of the ground it is the weaker the tree will be.

Do not dig holes far in advance of planting and don't plant if water seeps into the bottom of the hole before you get the tree in it-it's too wet. Do not put anything in the hole except the tree, good soil, and water. Fertilizer or manure will burn fragile young roots. Setting the tree upright in the hole, fill it about half full of dirt.

Tamp the dirt firmly but gently. Fill the hole with soil all the way and tamp.

Trees benefit greatly from a good watering as soon as planted. In a normal season, 2 good waterings are usually enough. If the first growing season is dry, more will be needed. At planting cut an unbranched tree a few inches to encourage branching.

For dwarfing trees cut branches back to 6 inches at planting. For semidwarf and standard, leave branches as is.

## Care During the First Years

For backyard growers we recommend purchasing an all-purpose fruit tree spray and following the instructions on timing and application. We also recommend plucking the flowers of the apple trees off the first two years to promote growth and minimize the risk of fire blight. It is very important to control weed and grasses, because they will pull water away from the trees and attract rodents and other pests.

For commercial growers your best resource will be your state cooperative extension. They will have spray guides for your specific areas. Be sure not to skimp on weed control and fire blight control in these young plantings. These can be the most devastating to the life of a young tree.



## ORCHARD SUPPLIES

Prices subject to change without notice.



### TREE FIX

#### Tying & Training Solution

Made from a long lasting Synthetic Rubber, especially for the fruit industry. It will grow with the tree. It is quick and easy to install. It is elastic so there is no annual re-adjustment. Strong enough to hold the load. Designed to last the life of the tree.

#### Branches to wire, Conduit or Bamboo

8cm/3.15" | Approx. 2200/bag

#### Trees to Conduit, Fasten Conduit or Bamboo to wire

11cm/4.3" long | Approx. 1230/bag

#### Trees to Conduit or Bamboo or Tree Trunks to wire

16cm/6.30" long | Approx. 1070/bag

5kg Bags . . . . . \$147.00/bag



### PICA PRUNERS

#### Proven Swiss Quality Hand Pruner

Light-weight, yet rugged; fits well into the palm of your hand for all day use. A unique hooked end helps hold and cut branches. We carry the Pica 1, with a high quality forged blade like the original Pica pruner but with the improved spring and updated handle of Pica 2. We carry parts for all of the pruners even the original Pica 1. Pica 2 you can replace both the blade and hook. The Pica 3 you can only replace the blade.

PICA 1 pruner. . . . . \$ 94.95

PICA 2 pruner. . . . . \$ 75.20

PICA 3 pruner. . . . . \$ 66.70

Qty. discounts w/ 3+ pruners

Qty. discounts w/ 3+ pruners

Replacement parts also available

Pica 2/3 Blade . . . . . \$15.10

Pica 2 Hook. . . . . \$18.25

Pica 1/2/3 Spring. . . . . \$4.25

Pica 1/2/3 Latch set . . . . . \$6.60

Nut & Bolt set . . . . . \$7.50



### Stake/TRELLIS CLIPS STABFIX

#### Metal Pole Clips

Wire clips to hold metal conduit stake or bamboo to a wire. Clip will not slide on the wire. Use with most wire gauges.

#### Metal Pole Clip #1 (Use with 1/2" poles.)

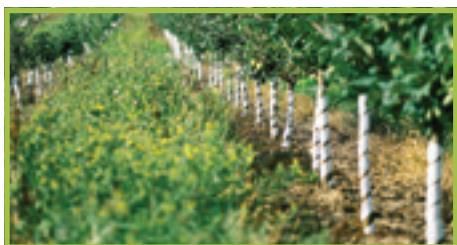
500/box . . . . . \$46.50

#### Metal Pole Clip #2 (7" long for use with 3/4" poles)

500/box . . . . . \$55.75





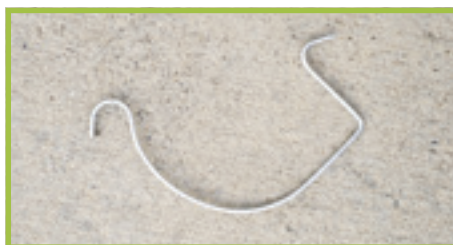


## MOUSE GUARDS

### Protect Young Trees

Spiral Plastic mouse guards protect young trees. Wrap around design is easy to install. Small holes permit air circulation around trees. Approx. 48" long. Can be cut in half to make two guards out of one.

**Sold in lots of 5. . . . . \$ 1.90/ each**  
**Call for quantity discounts.**



## WIRE CLIP PLANTFIX 70

### Large Metal Clips

A large metal clip for holding the tree to the wire. Approximately 4.5" between where it hooks on wire. Will not slide on the wire.

**500/Box . . . . . \$66.25**



## PLASTIC TIE TUBING

### Ideal for Holding Trees to Post

Comes in 3 different diameters. Semi permanent hollow tubing. UV stabilized. Stretches slightly.

#### GREEN TIE

**3 mm roll (Approx. 425' long) . . . . . \$7.00**  
**4 mm roll 2kg. (Approx. 918' long) . . . . . \$15.75**  
**6 mm roll 2kg . (Approx. 505' long). . . . . \$15.75**





## DEPOSITS & TERMS OF SALE

A deposit of 25% (\$ 25.00 minimum) is required at time of order to confirm order and hold trees. Nursery has the right to charge a higher deposit if nursery deems the variety requested not a favorable selling variety/ rootstock combination. If the deposit is not paid by stated date, the nursery reserves the right to cancel order. If order is canceled BEFORE NOVEMBER 1ST of the year prior to delivery, the buyer will be refunded in full. If the buyer cancels order AFTER NOVEMBER 1st of the year prior to delivery, the buyer will only be refunded if the nursery can resell the trees. Cancellations are not allowed on custom ordered(pre-bud) trees unless approved by nursery.

Buyer agrees to make payment in full on or before delivery unless prior credit arrangements are made, in which event payment shall be due within 30 days of invoice. A 2% discount on tree invoices only may be taken if paid by check, money order, or cash (not credit card) within 10 days of invoice date.

- We accept all major credit cards.
- Custom Order Pricing (Pre-Bud Orders) shall apply only if payment terms are met.
- Overdue accounts will be charged 1 ½% interest per month (18% annually).
- Tree size confirmed on order may be subject to substitution with corresponding change in price, depending on availability.
- Should delivery be prevented or the stock become injured from crop failure, fire, flood, drought, frost, strike or other causes beyond the control of Wafler Farms, Inc., your order shall be void.
- Prices subject to change without notice. All prices F.O.B. Wolcott, NY.

## OUR COMMITMENT TO QUALITY

### Scion Wood Selection & Trueness to Name

We take great care in our scion wood selection for budding to produce trees that are true to name and good representatives of the strain or variety. Nearly all of our wood comes from selected bearing trees or from our proven scion orchard. We inspect all nursery trees prior to harvest for trueness to name.

### Color Coding

All bundles of trees (10/bundle) are labeled with the names of variety and rootstock. All of our trees are color coded for both variety and rootstock. This makes it easy to identify individual trees as well.

### Storage

Our trees are stored in our climate controlled refrigerated cold storage. We are able to ship to our warmer climate customers when they need their stock. Our trees stay dormant in storage until you are ready for them, insuring you the best start for your trees.

### IPM

Our trees are grown using the latest integrated pest management techniques. We monitor our nursery several times a week for pest and disease problems. We irrigate as needed to ensure strong growing trees.





## TREE GUARANTEE

We guarantee our trees to be shipped in good condition and to grow if properly cared for upon receipt, as well as properly planted and maintained in a suitable environment. Should our trees fail to grow, Wafler Farms, Inc. holds the option to replace them free of charge or refund your purchase price upon notification.

**1. Within 5 days of delivery-claims must be filed for visible defects affecting the plant material. Including shortages and size of plants.**

**2. Nursery must be notified by July 1st of planting year for any claims of plant not starting to grow.**

We cannot be responsible for your losses caused by act of God, improper planting, neglect, disease, insect injury, frost, or other causes which are beyond our control.

**We do not recommend submerging of tree roots in water for long periods of time before planting.**

We guarantee our trees to be true to name. Should any stock prove otherwise and we are notified within 3 years of date of planting, we will replace them without charge, or at our option, refund the purchase price.

Do not store trees with apples or in storage rooms that have not been completely ventilated of Ethylene Gas. Warranty is void if trees are exposed to Ethylene Gas.

Purchaser is responsible for proper care and maintenance of trees including, but not limited to, protection and storage before planting and proper planting on a suitable and prepared site. Trees should be watered at time of planting and additionally as needed.

Weeds should be kept away from trees and trees should be protected from animals, insects and disease. Warranty is void if manure, fertilizer, or similar material is placed in the hole with the tree roots.

Our liability under the above warranty shall be limited to the original price of the trees. In no event shall Wafler Farms, Inc. be liable for indirect or consequential damage, whether or not resulting from or caused by negligence of the nursery. Wafler Farms, Inc. makes no other warranties either expressed or implied including, but not limited to, the merchantability and fitness for a particular purpose.

**We want you to be satisfied. If your trees are not doing well, please notify us at once. We can often suggest ways to correct the problem.**







10748 SLAGHT ROAD  
WOLCOTT, NY 14590



**NOW ACCEPTING**  
**CUSTOM ORDERS**  
**FOR 2026\***

**ORDER TODAY! 877.397.0874**

\*MINIMUM ORDER = 50 TREES

**ORDER TODAY!**

**INFO@WAFLEARNURSERY.COM**

**WAFLEARNURSERY.COM**

**877.397.0874**



**Scan for  
Current  
Inventory**